



**BEHARA**  
**COLLEGE OF ENGINEERING AND TECHNOLOGY**  
Approved by AICTE NEW DELHI & Affiliated to JNTU-GV, Vizianagaram  
BBth Division, Narava, GVMC, Visakhapatnam, Andhra Pradesh 530027, India  
e-mail: beharaenggclg@gmail.com  
www.beat.in



**Research &  
Development  
Cell**

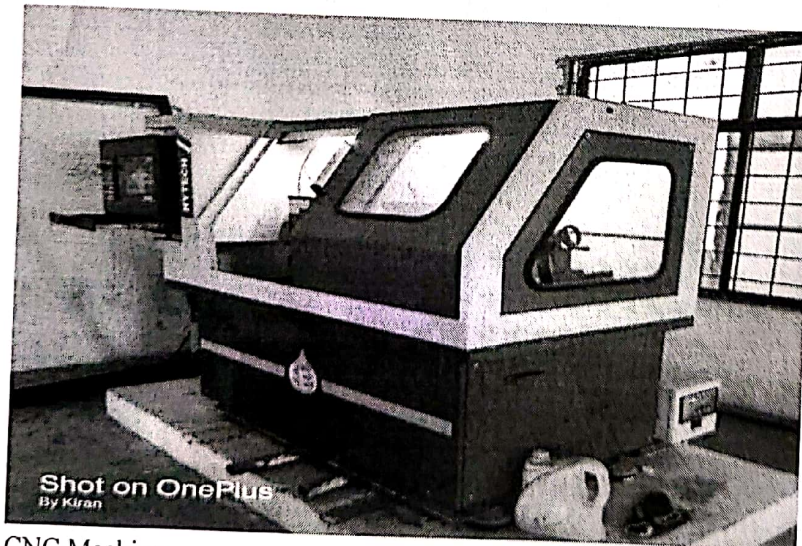
## RESEARCH INFRASTRUCTURE

The institution has established a well-structured research ecosystem to promote innovation, interdisciplinary research, and academic excellence. The research ecosystem is supported by well-equipped laboratories, smart classrooms, computer labs, modern library facilities.

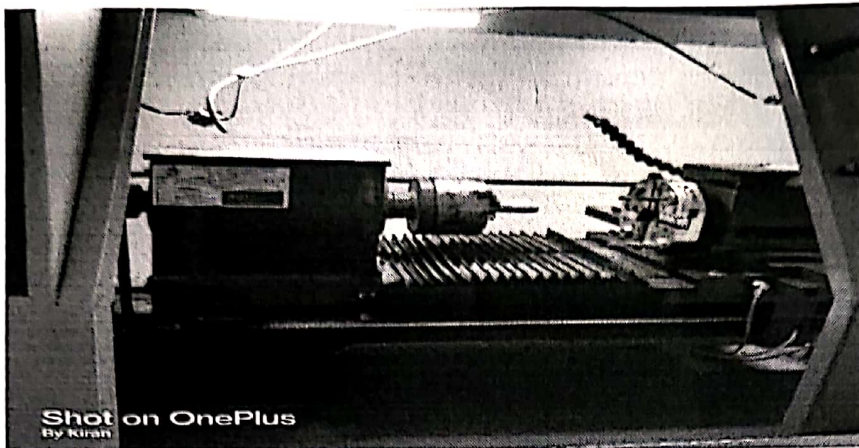
The institution provides access to computer laboratories, high-speed internet connectivity, e-resources, online research databases, and digital repositories, ensuring uninterrupted research activities. Continuous faculty mentorship, research orientation programs, FDPs, workshops, and training programs support capacity building and quality research outcomes.

Laboratories including Computer Lab, IT Lab, Communication Lab, Networks Lab, and CAD/CAM Lab are equipped with software tools such as Python, Java, MATLAB, Xilinx, Vivado, Network Simulators, MySQL, and CAD/CAM design platforms, enabling research in Artificial Intelligence, Data Analytics, Wireless Communication, Cybersecurity, Manufacturing Automation, and VLSI Design.

The institution also promotes student research culture through project-based learning, innovation clubs, hackathons, mini-projects, incubation support, and interdisciplinary research initiatives



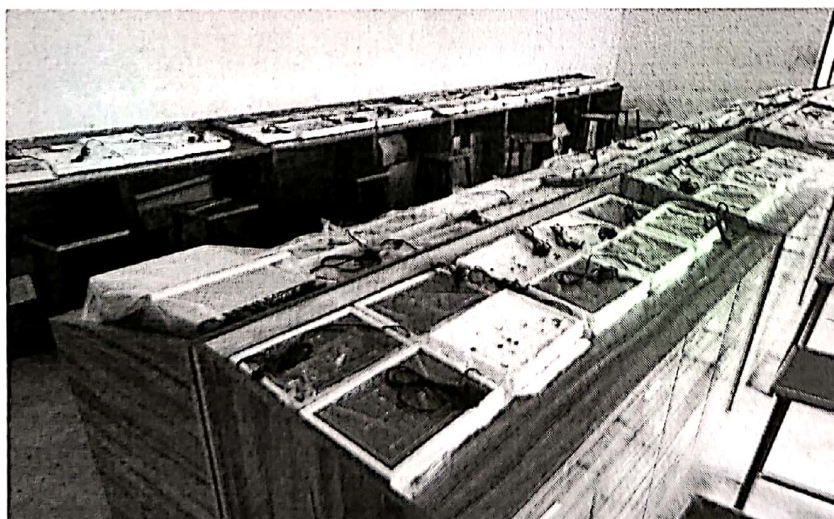
CNC Machine



CNC Machine



Simulation Lab



Electronics lab



## LIBRARY RESOURCES AND DIGITAL ACCESS

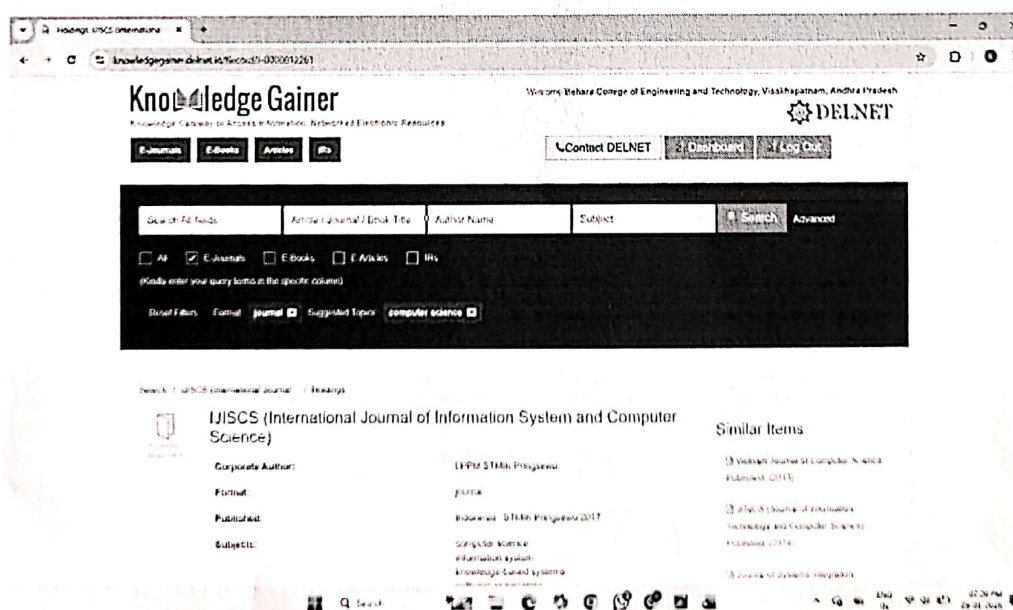
The central library is equipped with print and digital resources including textbooks, reference books, national and international journals, e-books, and online databases. The institution provides access to DELNET e-journals, e-learning platforms, and institutional repositories to support academic research and self-learning.

The library is an active member of DELNET (Developing Library Network), providing access to millions of bibliographic records, e-books, e-journals, theses, dissertations, and inter-library loan services. DELNET membership enables faculty and students to access resources beyond institutional holdings, strengthening research quality and academic depth.


Digital library facilities enable remote access to research databases, plagiarism detection tools, and academic content platforms. Reading halls, discussion areas, and online access terminals create a research-friendly academic environment.

The library plays a key role in promoting information literacy, research ethics awareness, and scholarly communication practices.

R&D cell in association with library conducted DELNET AWARENESS program to give a exposure to DELNET resources to faculty and students.



Delnet page

  
PRINCIPAL  
Dr V SRIVIDHAR PATNAIK M. Tech, Ph.D  
Bhahar College of Engineering and Technology  
GVMC  
Vishakhapatnam - 530027